

# Hercules® RetroDrain

## PRODUCT DATA SPECIFICATIONS

### PRODUCT DESCRIPTION

One-piece spun aluminum body and heavy duty cast aluminum strainer dome and clamping ring provide strength and durability. The drain flange has a depressed sump area to facilitate water drainage from the roof surface. The Hercules RetroDrain incorporates U-Flow® Seal technology for a mechanical watertight connection to PVC or cast iron pipes to prevent water from backup damage. Available in 3-in., 4-in., 5-in. and 6-in. sizes.

### FEATURES & BENEFITS

- One piece seamless body provides strength and durability without separation of the flange from the stem.
- Extra large flange allows positive attachment of roof flashing membrane while the sump area facilitates drainage.
- Simple and easy to install from rooftop in 15 to 30 minutes.
- Cast aluminum strainer dome and clamping ring.
- 12-in. long drain stem accommodates most existing field conditions with longer lengths available.
- Incorporates U-Flow Seal technology for a secure, watertight connection.

- Also available with a plastic dome or the cast-aluminum SuperDome.
- Saves time and money by allowing easy installation from the rooftop without disturbing occupants.

### APPLICATION

OlyFlow® RetroDrains are designed to replace existing drains in reroofing applications. Installed from the roof surface, OlyFlow RetroDrains are engineered to be installed without removing the existing plumbing or fixture while providing a watertight connection to the roof system and the existing plumbing.

### APPROVALS & STANDARDS



**ANSI/SPRI RD-1** is a national performance standard for retrofit roof drains. While most retrofit drains are not tested to this standard, OlyFlow Insert Drains – including the Hercules RetroDrain with U-Flow Seal – exceed the standard, which requires that the seal hold a 10-ft. column of water for 24 hours without leaking.



### PHYSICAL DATA

The data below is constant for each Hercules RetroDrain.

DRAIN BODY		SEAL	
11 gauge (.125") spun aluminum		Watertight U-Flow mechanical seal requires U-Flow screwdriver	
FLANGE		STRAINER DOME	
17½" diameter with sump area		Cast aluminum, plastic or aluminum SuperDome	
STEM		CLAMP RING	
12" length		Cast aluminum	

### ORDERING INFORMATION

CAT. NO.	SIZE	DOMES TYPE	PKG	DIMENSIONAL WEIGHT
HDAL3A	3"	Aluminum	Each	32 lbs.
HDAL4A	4"	Aluminum	Each	32 lbs.
HDAL5A	5"	Aluminum	Each	32 lbs.
HDAL6A	6"	Aluminum	Each	32 lbs.



## ROOFING PRODUCTS

153 BOWLES ROAD, AGAWAM, MA 01001  
800-633-3800 WWW.OLYFAST.COM INFO@OLYFAST.COM

Hercules®, RetroDrain®, OlyFlow®, SuperDome® and U-Flow® are trademarks of OMG, Inc. Copyright © 2011 OMG, Inc. All rights reserved.

# Hercules® RetroDrain

## INSTALLATION PROCEDURE

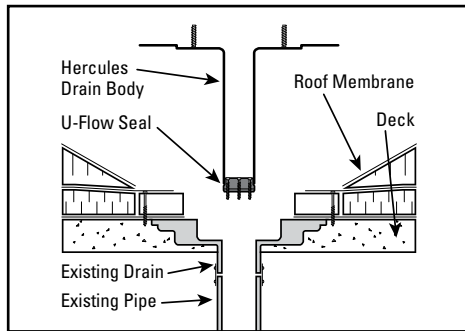
### FOR USE WITH

All types of roof covers.

### JOB PREPARATION

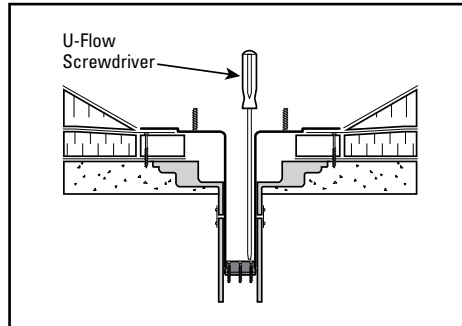
Remove existing strainer dome and clamping ring. Remove other existing drain components as required to enable Hercules Drain flange to lie flush on roof membrane. Remove any debris or constricting materials in the existing drain pipe that interferes with proper installation.

### STEP 1



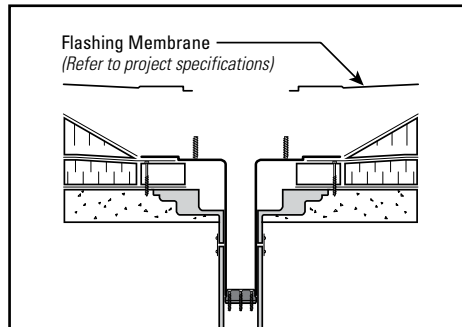
Examine the existing water leader to make sure there are no elbows that prevent the drain stem from being fully inserted into the pipe. (If an elbow is present, see "How to Shorten a Drain.") Insert U-Flow® Seal into end of drain stem and tighten screws enough to hold the seal in place during installation. Insert assembled drain into existing leader pipe until flange lies flush on roof membrane.

### STEP 2



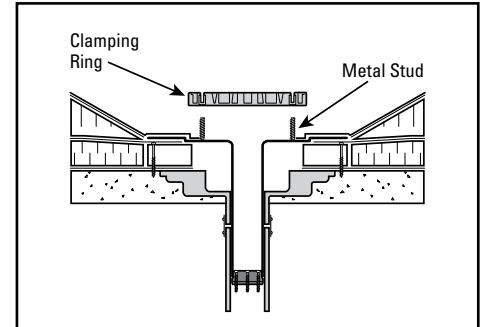
Alternately tighten seal compression ring screws with U-Flow Screwdriver until hand tight. Hercules Drain body is correctly installed when pressure placed on drain body results in no vertical movement. Do not overtighten the screws.

### STEP 3



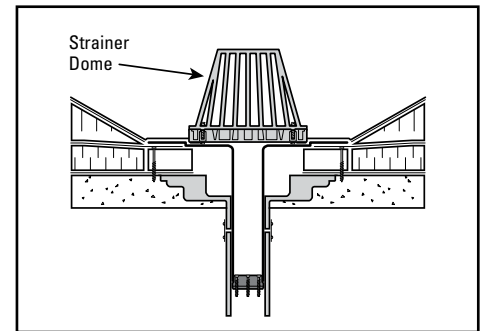
Secure the drain flange to the roof deck/nailer using a minimum of three pan-head fasteners, evenly spaced around the flange. The flashing membrane must cover and extend past the fastener head. Flashing membrane must be installed per roof membrane manufacturer's detail.

### STEP 4



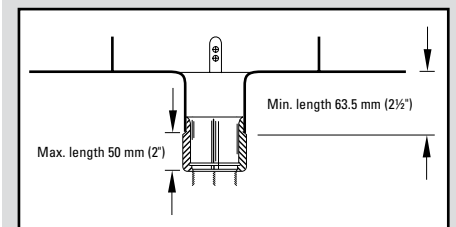
Place clamping ring over metal studs. Install stainless steel nut and lock washers tightening clamping ring against membrane flashing until secure.

### STEP 5



Install strainer dome by aligning screw holes with the holes in the clamping ring. Secure with screws provided.

### HOW TO SHORTEN AN OLYFLOW RETROFIT DRAIN



Make sure there is at least 4-inches of clear vertical distance in the existing pipe to accommodate the drain. Cut drain stem to desired length and insert U-Flow Seal. **Note:** Leave at least 2.5-inches of the drain stem to accommodate the seal.

Insert the U-Flow Seal in the cut drain stem and tighten the seal screws. Once the drain and seal have been assembled, insert it into the existing water leader and complete the assembly following installation steps 2 thru 5.



### ROOFING PRODUCTS

153 BOWLES ROAD, AGAWAM, MA 01001  
800-633-3800 WWW.OLYFAST.COM INFO@OLYFAST.COM

Hercules®, RetroDrain®, OlyFlow®, SuperDome® and U-Flow® are trademarks of OMG, Inc.  
Copyright © 2011 OMG, Inc. All rights reserved.

For technical assistance contact  
**OMG at 800-633-3800.**