

**HERCULES[®] RETRODRAIN
 INSTALLATION INSTRUCTIONS**

MEETS ANSI/SPRI RD-1 STANDARD

For Use With: All types of roof covers.

Job Preparation: Remove existing strainer dome and clamping ring. Remove other existing drain components as required to enable Hercules Drain flange to lie flush on roof membrane. Remove any debris or constricting materials in the existing drain pipe that interferes with proper installation.

**For technical assistance
 contact OMG at 800-633-3800.**

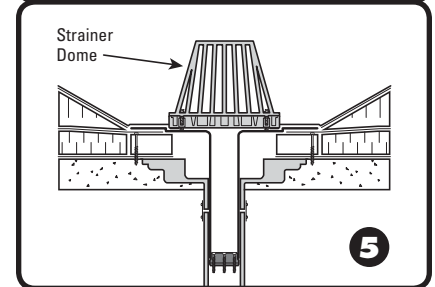
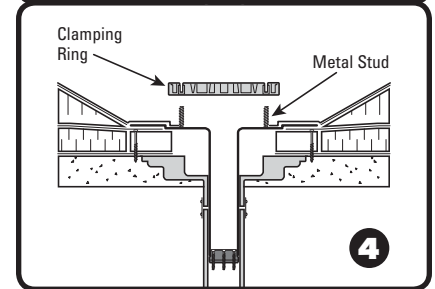
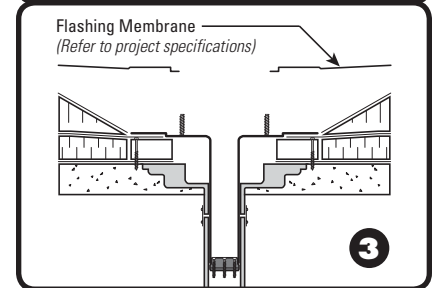
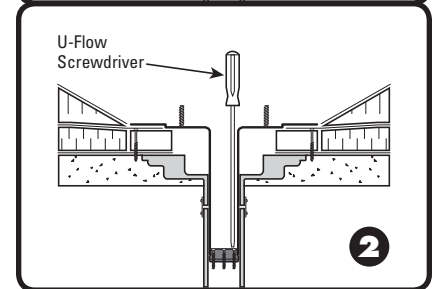
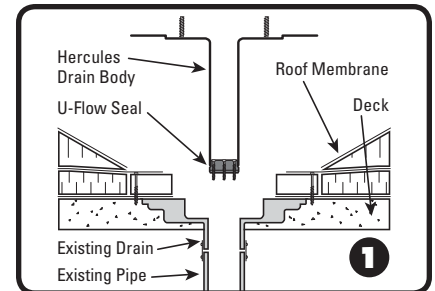
STEP 1 Examine the existing water leader to make sure there are no elbows that prevent the drain stem from being fully inserted into the pipe. (If an elbow is present, follow directions on reverse for shortening drain stem.) Insert U-Flow[®] Seal into end of drain stem and tighten screws enough to hold the seal in place during installation. Insert assembled drain into existing leader pipe until flange lies flush on roof membrane.

STEP 2 Alternately tighten seal compression ring screws with U-Flow Screwdriver until hand tight. Hercules Drain body is correctly installed when pressure placed on drain body results in no vertical movement. Do not overtighten the screws.

STEP 3 Secure the drain flange to the roof deck/nailer using a minimum of three pan-head fasteners, evenly spaced around the flange. The flashing membrane must cover and extend past the fastener head. Flashing membrane must be installed per roof membrane manufacturer's detail.

STEP 4 Place clamping ring over metal studs. Install stainless steel nut and lock washers tightening clamping ring against membrane flashing until secure.

STEP 5 Install strainer dome by aligning screw holes with the holes in the clamping ring. Secure with screws provided.



HOW TO SHORTEN AN OLYFLOW METAL RETROFIT DRAIN

In some applications it may be necessary to shorten the drain's stem length if the existing vertical distance is too shallow to accommodate the retrofit drain stem as manufactured.

For technical assistance
contact **OMG** at 800-633-3800.

STEP

1

Make sure there is at least 4-inches of clear vertical distance in the existing pipe to accommodate the drain. Cut drain stem to desired length and insert U-Flow Seal. **Note:** Leave at least 2.5-inches of the drain stem to accommodate the seal. See Figure 1.

STEP

2

Insert the U-Flow Seal in the cut drain stem and tighten the seal screws. Once the drain and seal have been assembled, insert it into the existing water leader and complete the assembly following installation steps 2 thru 5 (see reverse).

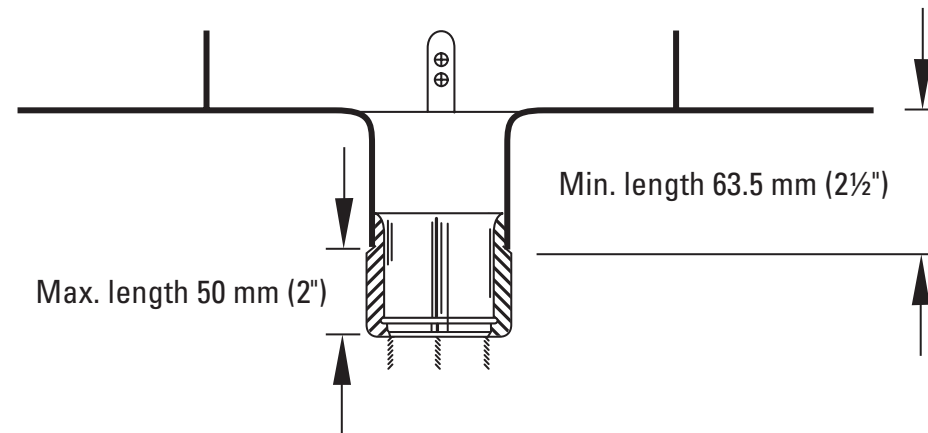


Figure 1: The minimum length of the metal retrofit drain stem with a U-Flow Seal Assembly.