

GUARDIAN

FALL PROTECTION



Product Name: Ridge-It Anchor

Part #: 00500; 00510; 00515

Instruction Manual

Do not throw away these instructions!

Read and understand these instructions before using equipment!

Introduction	1
Applicable Safety Standards	1
Worker Classifications	1
Product Specific Applications	2
Limitations	2-3
Components and Specifications	3
Installation and Use	4-5
Maintenance, Cleaning, and Storage	5
Inspection	6
Inspection Log	6
Safety Information	6-7
Labels	7

Introduction

Thank you for purchasing a Guardian Fall Protection Ridge-It Anchor. This manual must be read and understood in its entirety, and used as part of an employee training program as required by OSHA or any applicable state agency.


This and any other included instructions must be made available to the user of the equipment. The user must understand how to safely and effectively use the Ridge-It Anchor, and all fall safety equipment used in combination with the Ridge-It Anchor.

User Information	
Date of First Use:	_____
Serial #:	_____
Trainer:	_____
User:	_____

Applicable Safety Standards

When used according to instruction specifications, this product meets or exceeds all applicable OSHA 1926 Subpart M, OSHA 1910, ANSI Z359.1-2007, and ANSI A10.32-2012 standards for fall protection. Applicable standards and regulations depend on the type of work being done, and also might include state regulations if applicable. Consult regulatory agencies for more information on personal fall arrest systems and associated components.

Worker Classifications

	Understand the following definitions of those who work near or who may be exposed to fall hazards.
---	--

Qualified Person: A person with an accredited degree or certification, and with extensive experience or sufficient professional standing, who is considered proficient in planning and reviewing the conformity of fall protection and rescue systems.

Competent Person: A highly trained and experienced person who is ASSIGNED BY THE EMPLOYER to be responsible for all elements of a fall safety program, including, but not limited to, its regulation, management, and application. A person who is proficient in identifying existing and predictable fall hazards, and who has the authority to stop work in order to eliminate hazards.

Authorized Person: A person who is assigned by their employer to work around or be subject to potential or existing fall hazards.

It is the responsibility of a Qualified or Competent person to supervise the job site and ensure all applicable safety regulations are complied with.

Product Specific Applications



Use of equipment in unintended applications may result in serious injury or death. Maximum 1 attachment per connection point.



Personal Fall Arrest: Ridge-It Anchor may be used to support a MAXIMUM 1 PFAS for use in Fall Arrest applications. Structure must withstand loads applied in the directions permitted by the system of at least 5,000 lbs. Maximum free fall is 6', or up to 12' if used in combination with equipment explicitly certified for such use. Applicable D-ring: Dorsal.



Restraint: Ridge-It Anchor may be used in Restraint applications. Restraint systems prevent workers from reaching the leading edge of a fall hazard. Always account for fully deployed length of lanyard/SRL. Structure must withstand loads applied in the directions permitted by the system of at least 1,000 lbs. No free fall is permitted. Restraint systems may only be used on surfaces with slopes up to 4/12 (vertical/horizontal). Applicable D-rings: Dorsal, Chest, Side, Shoulder.

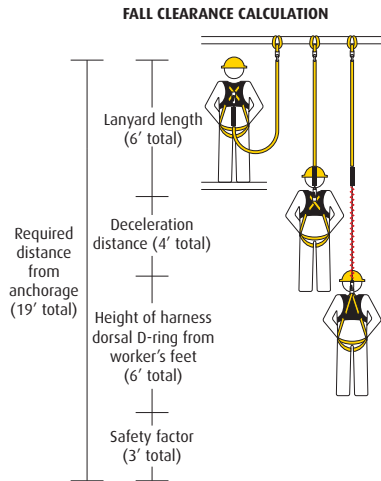
For all applications: worker weight capacity range (including all clothing, tools, and equipment) is 130-420 lbs.

Limitations

Fall Clearance: There must be sufficient clearance below the anchorage connector to arrest a fall before the user strikes the ground or an obstruction. When calculating fall clearance, account for a MINIMUM 3' safety factor, deceleration distance, user height, length of lanyard/SRL, and all other applicable factors.

Diagram shown is an example fall clearance calculation ONLY.

Swing Falls: Prior to installation or use, make considerations for eliminating or minimizing all swing fall hazards. Swing falls occur when the anchor is not directly above the location where a fall occurs. Always work as close to in line with the anchor point as possible. Swing falls significantly increase the likelihood of serious injury or death in the event of a fall.



Compatibility: When making connections with Ridge-It Anchor, eliminate all possibility of roll-out. Roll-out occurs when interference between a hook and the attachment point causes the hook gate to unintentionally open and release. All connections must be selected and deemed compatible with Ridge-It Anchor by a Competent Person. All connector gates must be self-closing and self-locking, and withstand minimum loads of 3,600 lbs. See the following for examples of compatible/incompatible connections:

Connector closed and locked to D-ring. **OK.**



Connector to integral lanyard. **NO.**

Two or more snap hooks or carabiners connected to each other. **NO.**



Connector directly to webbing. **NO.**

Two connectors to same D-ring. **NO.**



Application that places load on gate. **NO.**

Incompatible or irregular application, which may increase risk of roll-out. **NO.**

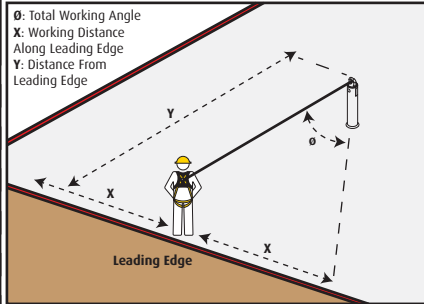


Connector directly to horizontal lifeline. **NO.**

Correct Anchorage Positioning:

This chart details allowable working zones required to reduce risk of swing falls and improper side loading. ALWAYS adhere to information specified by chart.

Anchor Distance From Leading Edge (Y)	Working Distance Along Roof Edge (Either Direction) (X)	Working Angle From Perpendicular (θ)
6'	8'	53°
10'	9' - 9"	45°
15'	11' - 7"	38°
20'	13' - 3"	33°
25'	14' - 6"	30°
30'	16'	28°
35'	17' - 2"	26°
40'	18' - 3"	24°
45'	19' - 4"	23°
50'	19' - 10"	21°
55'	21' - 4"	21°
60'	22' - 3"	21°



For example, if the anchorage connector is 6' from the leading edge (Y), the working distance (X) is 8' in each direction from the perpendicular, which translates to a 53° working angle.

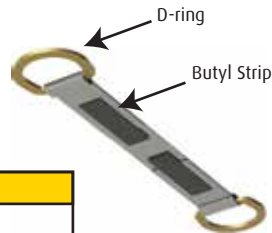
Components and Specifications

Materials: stainless steel, zinc-plated steel, and butyl.

Fasteners: 3", 16d stainless steel spiral nails.

- #00500 and #00510: 8 provided fasteners.
- #00515: 12 provided fasteners.

Part #	Length	Description
00500	9--3/4"	Ridge-It Anchor w/1 D-ring. RIDG-1.
00510	18"	Ridge-It Anchor w/2 D-rings. RIDG-2.
00515	18"	Ridge-It Tile Anchor w/1 D-ring.



Installation and Use



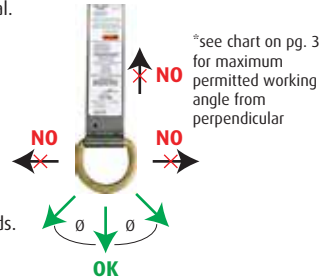
For permanent installation applications ONLY. Ridge-It Anchors must NEVER be reinstalled.

Prior to installation, plan your system:

1. Ensure all PFAS equipment is selected and deemed compatible with Ridge-It Anchor by a Competent Person.
2. Select installation location for Ridge-It Anchor. Selected installation location must withstand minimum loads as specified by this instruction manual.



NEVER load anchor improperly. Prior to installation, refer to anchorage positioning chart (pg. 9) to ensure installation location will satisfy intended work application(s).



3. Make considerations for eliminating or minimizing swing fall hazards.

Minimum Substrate Requirements:

- Wood: 3/4" CDX and 3" support beam. (8) 3", 16d stainless steel spiral nails (provided). Fasteners must fully embed through sheeting and into support beam. MINIMUM 2" fastener embedment into support beam.
- Metal: 20 gauge. For metal installations, use (8) #14-10 x 2" sheet metal screws (not provided).
- Compatible Roof Pitch: flat - vertical. NEVER install past vertical (such as on underside of beam).

Installation:

- Adhere to installation instructions specific to product part # ONLY.
- Always place Butyl Strips down against work surface.
- Ridge-It Anchors must NEVER be used in horizontal lifeline applications.

#00500:

1. Determine desired location of Ridge-It Anchor. Ridge-It Anchor must be installed perpendicular to roof peak and parallel with truss or support beam. Label must face up. Butyl Strip must lie flush against roof surface.
2. Butyl Strips function to provide weather resistance and waterproofing, thereby allowing Ridge-It Anchor to be installed directly on roof surface without removing ridge cap/roof shingling. It is permitted to install in a retrofit application beneath ridge cap/roof shingling; if doing so, remove all applicable ridge cap/roof shingling at selected installation location.
3. Position Ridge-It Anchor at selected installation location. Install all (8) 3", 16d nails into all fastener installation locations. MINIMUM 2" fastener embedment into support beam.
4. If applicable, ensure roof shingling is fully installed/reinstalled over Ridge-It Anchor according to shingling manufacturer's instructions, and the judgment of a Competent Person. Shingling must fully cover Ridge-It Anchor body. D-ring must remain uncovered.



#00510:

1. Determine desired location of Ridge-It Anchor. Ridge-It Anchor must be installed perpendicular to roof peak and parallel with truss or support beam. Label must face up. Butyl Strips must lie flush against roof surface.

2. Butyl Strips function to provide weather resistance and waterproofing, thereby allowing Ridge-It Anchor to be installed directly on roof surface without removing ridge cap/roof shingling. It is permitted to install in a retrofit application beneath ridge cap/roof shingling; if doing so, remove all applicable ridge cap/roof shingling at selected installation location.

3. Bend Ridge-It Anchor at its center so it will fit snugly over selected installation location.

4. Position Ridge-It Anchor so center of body is located directly over peak of roof.

5. Install all (8) 3", 16d nails into all fastener installation locations. Begin by installing (1) fastener each into topmost and bottommost fastener installation location to secure position of Ridge-It Anchor, then proceed with installation of remaining nails. MINIMUM 2" fastener embedment into support beam.



6. If applicable, ensure ridge cap/roof shingling is fully installed/reinstalled over Ridge-It Anchor according to ridge cap/roof shingling manufacturer's instructions, and the judgment of a Competent Person. Ridge cap or shingling must fully cover Ridge-It Anchor body. D-ring must remain uncovered.

#00515:

1. Determine desired location of Ridge-It Tile Anchor. Ridge-It Anchor must be installed perpendicular to roof peak and parallel with truss or support beam. D-ring will be positioned on opposite side of roof from Fastener Installation Locations. Label must face up.

2. If installed in a retrofit application, remove all applicable ridge cap/roof tiling at selected installation location.

3. Slightly bend Ridge-It Tile Anchor at its center so it will fit snugly over selected installation location.

4. Position Ridge-It Anchor so center of body is located directly over peak of roof.



5. Install all (12) 3", 16d nails into all fastener installation locations. MINIMUM 2" fastener embedment into support beam.

6. Ensure ridge cap/roof tiling are fully installed/reinstalled over Ridge-It Tile Anchor according to manufacturer's instructions or judgment of a Competent Person. Ridge cap/roof tiling must fully cover Ridge-It Tile Anchor body. Ridge-It Tile Anchor D-ring must remain uncovered.



Maintenance, Cleaning, and Storage

If Ridge-It Anchor fails inspection in any way, immediately remove it from service, and contact Guardian to inquire about its return or repair.

Cleaning after use is important for maintaining the safety and longevity of Ridge-It Anchor. Remove all dirt, corrosives, and contaminants from Ridge-It Anchor before and after each use. If Ridge-It Anchor cannot be cleaned with plain water, use mild soap and water, then rinse and wipe dry. NEVER clean Ridge-It Anchor with corrosive substances.

When not in use, store equipment where it will not be affected by heat, light, excessive moisture, chemicals, or other degrading elements.

Inspection

Prior to EACH use, inspect Ridge-It Anchor for deficiencies, including, but not limited to, corrosion, deformation, pits, burrs, rough surfaces, sharp edges, cracking, rust, paint buildup, excessive heating, alteration, broken stitching, fraying, and missing or illegible labels. IMMEDIATELY remove Ridge-It Anchor from service if defects or damage are found, or if exposed to forces of fall arrest.

Ensure that applicable work area is free of all damage, including, but not limited to, debris, rot, rust, decay, cracking, and hazardous materials. Ensure that selected work area will support the application-specific minimum loads set forth in this instruction manual. Work area MUST be stable.

At least every 6 months, a Competent Person other than the user must inspect Ridge-It Anchor. **Competent Person inspections MUST be recorded in inspection log in instruction manual and on equipment inspection grid label. The Competent Person must sign their initials in the box corresponding to the month and year the inspection took place.**

During inspection, consider all applications and hazards Ridge-It Anchor have been subjected to.

Inspection Log

Date of First Use: _____.

Product lifetime is 5 years from Date of First Use, or, if not recorded, from Date of Manufacture, as long as it passes pre-use and Competent Person inspections. User must inspect prior to EACH use. Competent Person other than user must complete formal inspection at least every 6 months. Competent Person to inspect and initial.

	J	F	M	A	M	J	J	A	S	O	N	D
YR												
YR												
YR												
YR												
YR												

This inspection log must be specific to one Ridge-It Anchor. Separate inspection logs must be used for each Ridge-It Anchor. All inspection records must be made visible and available to all users at all times. If equipment fails inspection IMMEDIATELY REMOVE FROM SERVICE.

Safety Information



Failure to understand and comply with safety regulations may result in serious injury or death. Regulations included herein are not all-inclusive, are for reference only, and are not intended to replace a Competent Person's judgment or knowledge of federal or state standards.

Do not alter equipment. Do not misuse equipment.

Workplace conditions, including, but not limited to, flame, corrosive chemicals, electrical shock, sharp objects, machinery, abrasive substances, weather conditions, and uneven surfaces, must be assessed by a Competent Person before fall protection equipment is selected.

The analysis of the workplace must anticipate where workers will be performing their duties, the routes they will take to reach their work, and the potential and existing fall hazards they may be exposed to. Fall protection equipment must be chosen by a Competent Person. Selections must account for all potential hazardous workplace conditions. All fall protection equipment should be purchased new and in an unused condition.

Fall protection systems must be selected and installed under the supervision of a Competent Person, and used in a compliant manner. Fall protection systems must be designed in a manner compliant with all federal, state, and safety regulations. Forces applied to anchors must be calculated by a Competent Person.

Unless explicitly stated otherwise, the maximum allowable free fall distance for lanyards must not exceed 6'. No free fall allowed for non-LE SRLs. Class A SRLs must arrest falls within 24"; Class B SRLs must arrest falls within 54".

Harnesses and connectors selected must be compliant with manufacturer's instructions, and must be of compatible size and configuration. Snap hooks, carabiners, and other connectors must be selected and applied in a compatible fashion. All risk of disengagement must be eliminated. All snap hooks and carabiners must be self-locking and self-closing, and must never be connected to each other.

A pre-planned rescue procedure in the case of a fall is required. The rescue plan must be project-specific. The rescue plan must allow for employees to rescue themselves, or provide an alternative means for their prompt rescue. Store rescue equipment in an easily accessible and clearly marked area.

Training of Authorized Persons to correctly erect, disassemble, inspect, maintain, store, and use equipment must be provided by a Competent Person. Training must include the ability to recognize fall hazards, minimize the likelihood of fall hazards, and the correct use of personal fall arrest systems.

NEVER use fall protection equipment of any kind to hang, lift, support, or hoist tools or equipment, unless explicitly certified for such use.

Equipment subjected to forces of fall arrest must immediately be removed from use.

Age, fitness, and health conditions can seriously affect the worker should a fall occur. Consult a doctor if there is any reason to doubt a user's ability to withstand and safely absorb fall arrest forces or perform set-up of equipment. Pregnant women and minors must not use this equipment.

Physical harm may still occur even if fall safety equipment functions correctly. Sustained post-fall suspension may result in serious injury or death. Use trauma relief straps to reduce the effects of suspension trauma.

Labels

***Label might not be visible after installation. All inspection must be recorded in instruction manual. This instruction manual must be made visible and available to users at all times.**

GUARDIAN
FALL PROTECTION
PERFORMANCE RATED BY ESR-11

6305 S. 231st St.
Kent, WA 98032

1-800-466-6385 www.guardianfall.com

Ridge-It Anchor

Part #: 00500

Date of Manufacture:
[REDACTED]

Prior to use, read and understand all manufacturer's instructions provided with equipment at time of shipment from manufacturer.

Compliant with all OSHA 1910, 1926 Subpart M, ANSI Z359.2-2007, and ANSI Z359.2-2012 regulations.

Worker capacity range (including all equipment):
130-310 lbs.,
or up to 420 lbs. (See instructions).

Materials: stainless steel and zinc-plated steel.

Structure must withstand loads of at least 5,000 lbs.

Refer to instruction manual for all model-specific installation procedures.

All equipment to be used in combination with Ridge-It Anchors **MUST** be selected and deemed compatible by a Competent Person.

User must inspect prior to EACH use. Competent Person must inspect at least every 6 months.

WARNING

MAXIMUM 1 attachment per Ridge-It Anchor.

Keep away from all potential hazards including, but not limited to, heat, electricity, chemicals, and sharp or abrasive edges and surfaces.

User must inspect prior to EACH use. Competent Person must inspect at least every 6 months.

If equipment fails inspection, **IMMEDIATELY REMOVE FROM SERVICE**

DO NOT REMOVE LABEL

90109 (Rev. C)
Made in China.

GUARDIAN
FALL PROTECTION
PERFORMANCE RATED BY ESR-11

6305 S. 231st St.
Kent, WA 98032

1-800-466-6385 www.guardianfall.com

Ridge-It Tie Anchor

Part #: 00515

Date of Manufacture:
[REDACTED]

Prior to use, read and understand all manufacturer's instructions provided with equipment at time of shipment from manufacturer.

Compliant with OSHA 1910, 1926 Subpart M, ANSI Z359.2-2007, and ANSI Z359.2-2012 regulations.

Worker capacity range (including all equipment):
130-310 lbs., or up to 420 lbs. (See instructions).

Materials: stainless steel and zinc-plated steel.

Structure must withstand loads of at least 5,000 lbs.

Refer to instruction manual for all model-specific installation procedures.

All equipment to be used in combination with Ridge-It Anchors **MUST** be selected and deemed compatible by a Competent Person.

User must inspect prior to EACH use. Competent Person must inspect at least every 6 months.

WARNING

MAXIMUM 1 attachment per Ridge-It Anchor.

Keep away from all potential hazards including, but not limited to, heat, electricity, chemicals, and sharp or abrasive edges and surfaces.

If equipment fails inspection, **IMMEDIATELY REMOVE FROM SERVICE**

DO NOT REMOVE LABEL

90109 (Rev. C)
Made in China.

GUARDIAN
FALL PROTECTION
PERFORMANCE RATED BY ESR-11

6305 S. 231st St.
Kent, WA 98032

1-800-466-6385 www.guardianfall.com

Ridge-It Anchor

Part #: 00510

Date of Manufacture:
[REDACTED]

Prior to use, read and understand all manufacturer's instructions provided with equipment at time of shipment from manufacturer.

Compliant with all OSHA 1910 & 1926 Subpart M, and ANSI Z359.1-07 & A10.32-12 regulations.

Worker capacity range (including all equipment):
130-310 lbs., or up to 420 lbs. (See instructions)

Materials: stainless steel and zinc-plated steel

Structure must withstand loads of at least 5,000 lbs.

All equipment to be used in combination with Ridge-It Anchors **MUST** be selected and deemed compatible by a Competent Person.

WARNING

MAXIMUM 1 attachment per Ridge-It Anchor.

Keep away from all potential hazards including, but not limited to, heat, electricity, chemicals, and sharp or abrasive edges and surfaces.

User must inspect prior to EACH use. Competent Person must inspect at least every 6 months.

If equipment fails inspection, **IMMEDIATELY REMOVE FROM SERVICE**

DO NOT REMOVE LABELS

90133 (Rev. D)
Made in China.

GUARDIAN
FALL PROTECTION
PERFORMANCE RATED BY ESR-11

6305 S. 231st St.
Kent, WA 98032

1-800-466-6385 www.guardianfall.com

INSPECTION GRID

	J	F	M	A	M	J	J	A	S	O	N	D
1"												
1"												
1"												
1"												

If equipment fails inspection, **IMMEDIATELY REMOVE FROM SERVICE**

User must inspect prior to EACH use. Competent Person must complete formal inspection every 6 months. Competent Person to inspect and initial.

Date of First Use:
[REDACTED]

Product lifetime is indefinite as long as equipment passes pre-use and Competent Person inspections.

DO NOT REMOVE LABELS