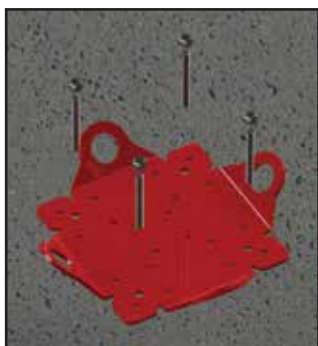
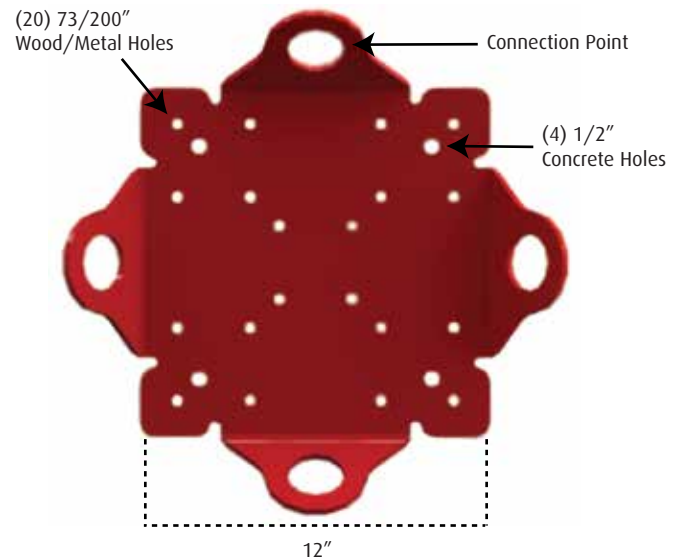


4-Way Plate Anchor

Part #: 00691



Product Specifications and Applications

- Part #: 00691
- Material: 100% 1/4" Hot Rolled Steel.
- Supports 1 worker in Fall Arrest, or 2 workers in Fall Restraint.
- When used in combination with a horizontal lifeline system, can support 2 workers in Fall Arrest, or 4 workers in Fall Restraint.
- Applicable for wood, metal, and concrete applications.
- 4 connection points greatly increase the potential working range, as a worker could detach from a connection point, reattach to the opposite connection point, and be able to work in Fall Arrest or Restraint on the other side of a building, all from the same anchor.
- 90 degree angles between connection points also make the 4-Way Plate Anchor a perfect rooftop corner joint for horizontal lifeline systems.

Fasteners

Wood application:

- (20) #14-10 2" wood screws.
- Product # 00668.

Metal application:

- (20) #14-10 2" metal screws.
- Product # 00669.

Concrete application:

- (4) 1/2" Threaded ROD assemblies, or (4) compatible fasteners.
- Concrete fasteners must be selected by a Competent Person.